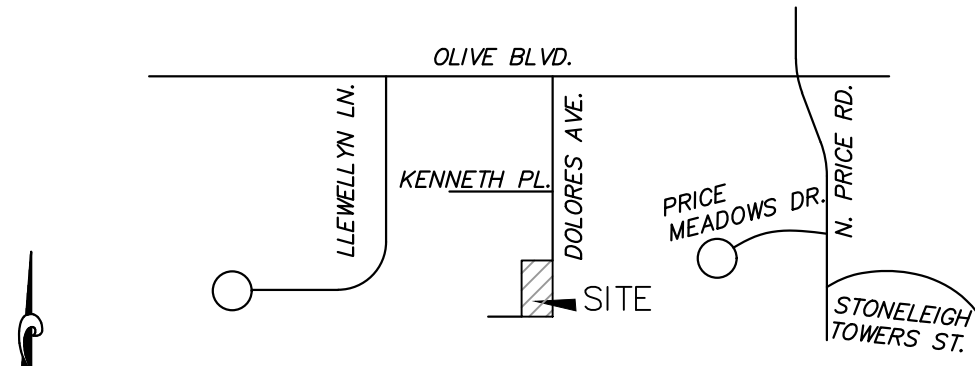
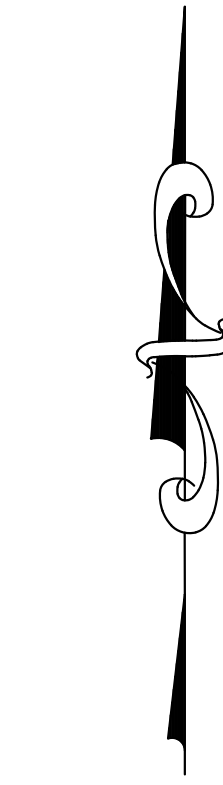


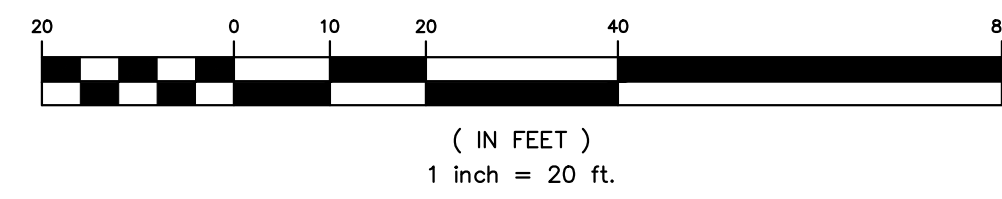
**LOCATION MAP**



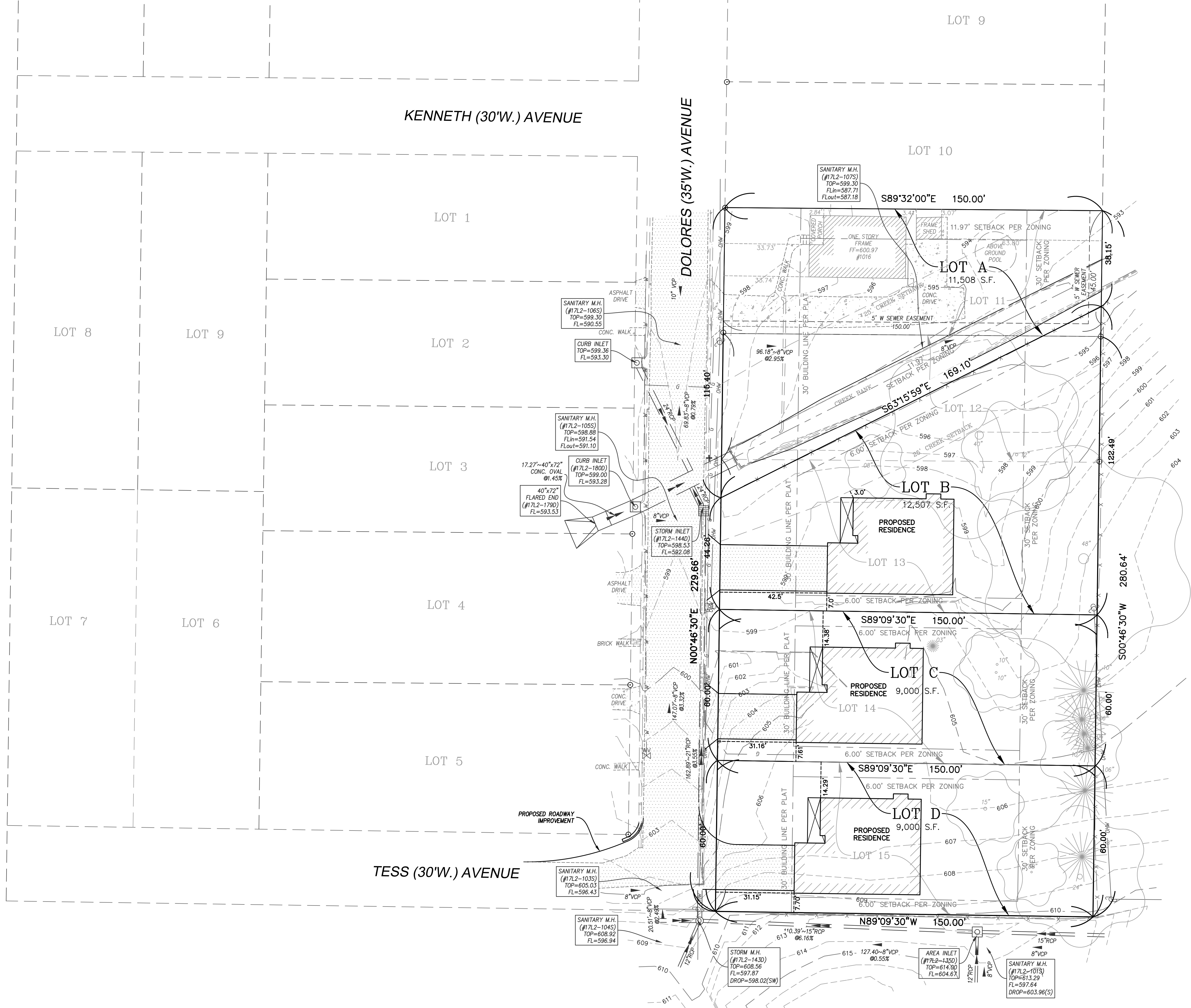
N.T.S.



**GRAPHIC SCALE**



**OLIVETTE TERRACE LOTS 11 THROUGH 15 BOUNDARY ADJUSTMENT**  
 BEING LOTS 11 THROUGH 15  
 IN BLOCK 1 OF OLIVETTE TERRACE (P.B. 22, PG. 2),  
 LOCATED IN SECTION 5, TOWNSHIP 45 NORTH, RANGE 6 EAST,  
 CITY OF OLIVETTE, ST. LOUIS COUNTY, MISSOURI



**THE STERLING CO.**

**ENGINEERS & SURVEYORS**

5055 New Baumgartner Road  
 St. Louis, Missouri 63129  
 Ph. 314-487-0440 Fax 314-487-8944  
 www.sterling-eng-sur.com

DRAWN BY:	SSP	MSD P# - N/A
CHECKED BY:	JEW	DATE: 01/26/2022
JOB NO.:	21-04-102	PRELIMINARY DEVELOPMENT PLAN

Drawing name: V:\2104102\_1004 & 1014 DOLORES\Drawings\Surveying\Record\1004 & 1014 DOLORES - Record PlotNEW.dwg Plotted on: Jan 26, 2022 - 5:08pm Plotted by: whitehead